

HHOS Australia

Shree Bhotenamlang School Sanitation  
Improvement Program

In Partnership with HELP Nepal

Sixth Visit: Plumbing work PHOTO Report : 17 to 26 Feb 2019

Report Prepared by:  
Bishnu Shrestha  
HHOS – Australia – Nepal Manager

## Plumbing work by International plumbing team



The plumbing materials – verifying at Melamchi shop.



Fixing the GI threader



Teaching Jale Tamang – How to make threading on GI pipe.





GI pipe works – for the tap connections.



The SMC chairperson Suke Tamang enjoying by making thread on the GI pipe.





Checking the tap height by using lower class children – lower Toilet.





Tyson Knight – working on GI connectors.



Hand washing and water drinking taps for lower toilet.



Pipe level checking





Vilas Dian working to install taps inside the toilet





Drainage work for hand washing and water drinking taps.





Marking and soil excavation work for SOAKAGE TRENCH – for Lower toilet.



Soakage trench marking for upper toilet.





Marking at 2 inch distance to make a hole on 4 inch PVC pipe to be used for soaking trench.



Making a hole on 4 inch PVC pipe.



Wrapping of the perforated PVC pipe by CEMENT BAGS before laying onto the soakage trench..





Pan setting practical lesson to Jale Tamang.



Jale Tamang – setting the toilet pan.



Setting of toilet pans.

Set toilet pan.





Drainage systems connected to septic tank of lower toilet.





Drainage from the toilet, hand washing and drinking water taps to the septic tank at lower toilet.





Prepared trench.



The trench is filled with gravel up 9 inch from bottom.



Laying of perforated & fabricated PVC pipes.



Covering of the Pipes by gravel up to 6 inches above from pipe and covered the trench by soil on top.





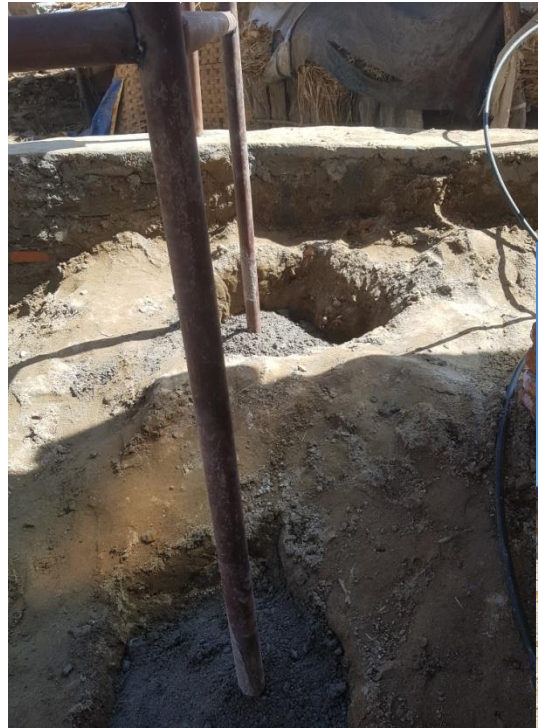
Tap - GI work – Teaching- Learning by doing.





Toilet pan setting, drainage and vent pipe at upper toilet.





New water tank stand placed beside upper toilet





New water tank installation and the water line is connected to the upper toilet, hand washing and drinking taps as well as connected to the lower toilet.





Water filler pipe line for both upper and lower tank.



Pipe line and gate valve to toilet block – upper toilet.



Out side taps at upper toilet.



Inside & out side tap connections.





Vent pipe and drainage at upper toilet.



Inspection Opening



Drainage from septic to  
soakage trench – upper  
toilet



Drainage from toilet and hand  
basins to septic tank at upper  
toilet.





Dugged trench at upper toilet



Drainage Pipe line to  
soakage trench.



Placement of perforated cement bag  
wrapped pvc pipe



The soakage PVC pipes are  
covered and filled with gravel.



All the trenches are filled with soil.



All plumbing work completed.



## Recommendations and plan:

### **For the team:**

1. The local team to start rendering work
2. BS to go to Bhotenamlang with Carpenter to place ready made doors, fly mesh etc after render work completes.

Thank you